



23 South Mission Street
Suite C
Wenatchee, WA 98801

Tel: (509) 293-5566
Fax: (509) 664-6817

*Cost estimate
to accompany
conceptual drawing
presented at 1/17/12
committee meeting*

February 16, 2012

Entiat School District No. 127

2650 Entiat Way
Entiat, WA 98822

Subject: #0941

Potential Project Costs

Michael Wyant, Superintendant,

We have developed a revised preliminary cost estimate based on the program and sketches presented on January 17, 2012. These amounts are rough estimates at this time, based on square footage costs and should be used for planning purposes only.

Assumptions made include:

- Moderate level of finishes, no high end materials
- Construction similar to existing
- Budget based on 2012 costs

Modernizations/ interior modifications

- Modernize elementary wing 25,550 sf @ \$190/sf \$4,854,500

New Construction

- Elementary classrooms 5,400 sf @ \$220/sf \$1,188,000
- Commons 6,600 sf @ \$200/sf \$1,320,000

Site work \$300,000

Subtotal \$7,662,500

Taxes, fees and contingency (40%) \$3,065,000

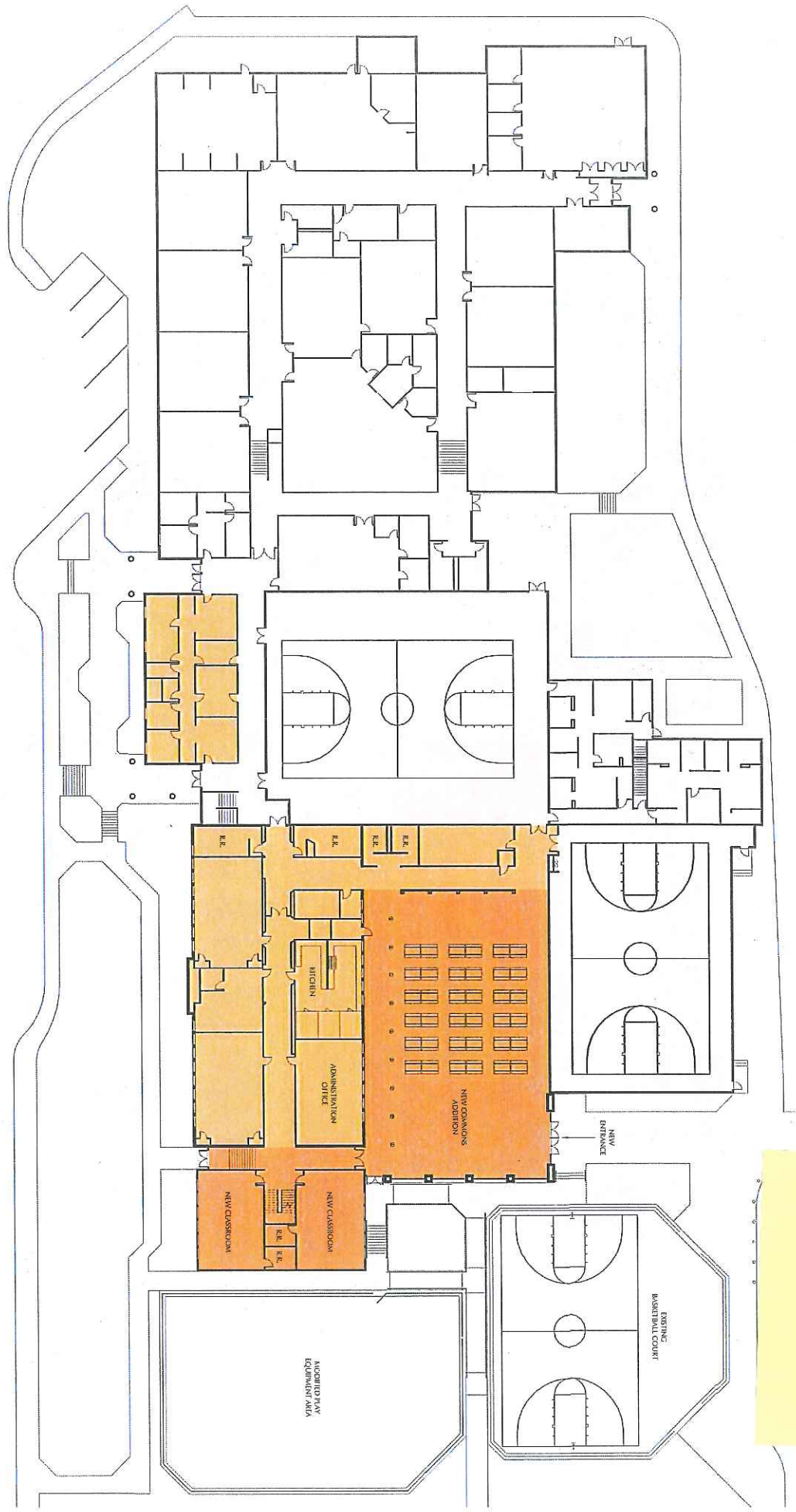
TOTAL PROJECT COSTS \$10,727,500

Potential State match for elementary wing modernization \$2,775,300

Local funds \$7,952,200

1/16/12

Developed at
Committee's request for
1/17/12 meeting



⊕ 1 FLOOR PLAN
SCALE: V.P.B. = 1"=0'

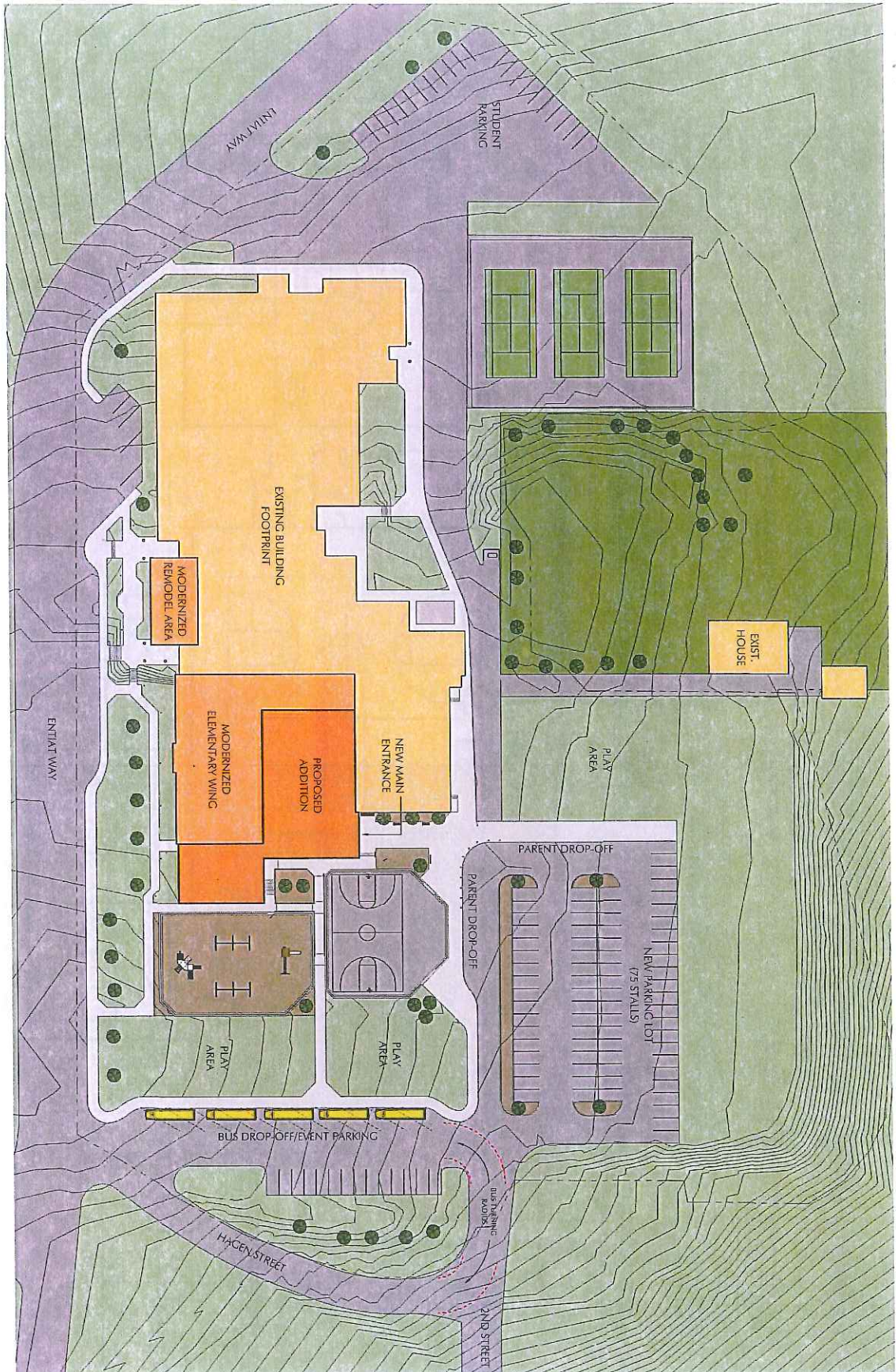
FORTE
ARCHITECTS
ENTIA SCHOOL DISTRICT #127
COMMONS & CLASSROOM ADDITION
2650 Entiat Way
Entiat, WA 98822
01/17/2012 0941

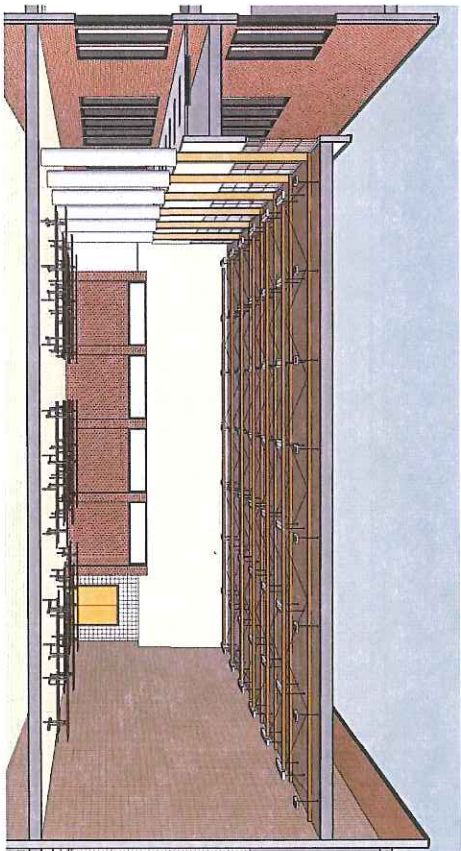
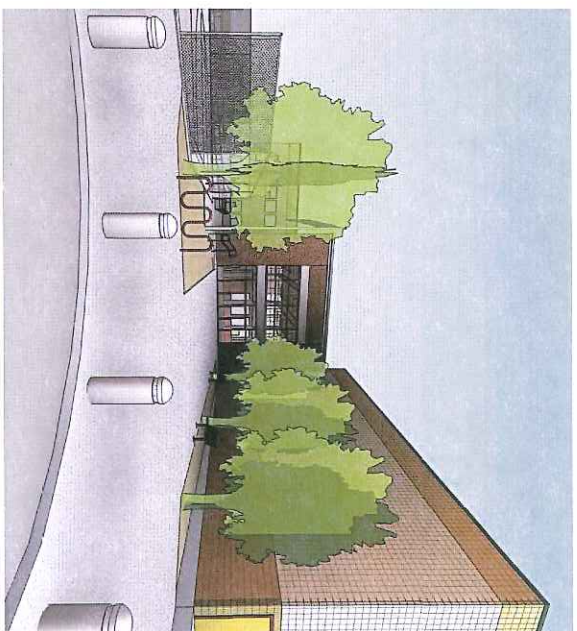
1/17/12

ENTIAT SCHOOL DISTRICT #127
 COMMONS & CLASSROOM ADDITION

1/17/12

1 SITE PLAN
 SCALE: 1/32" = 1'-0"





1/17/12